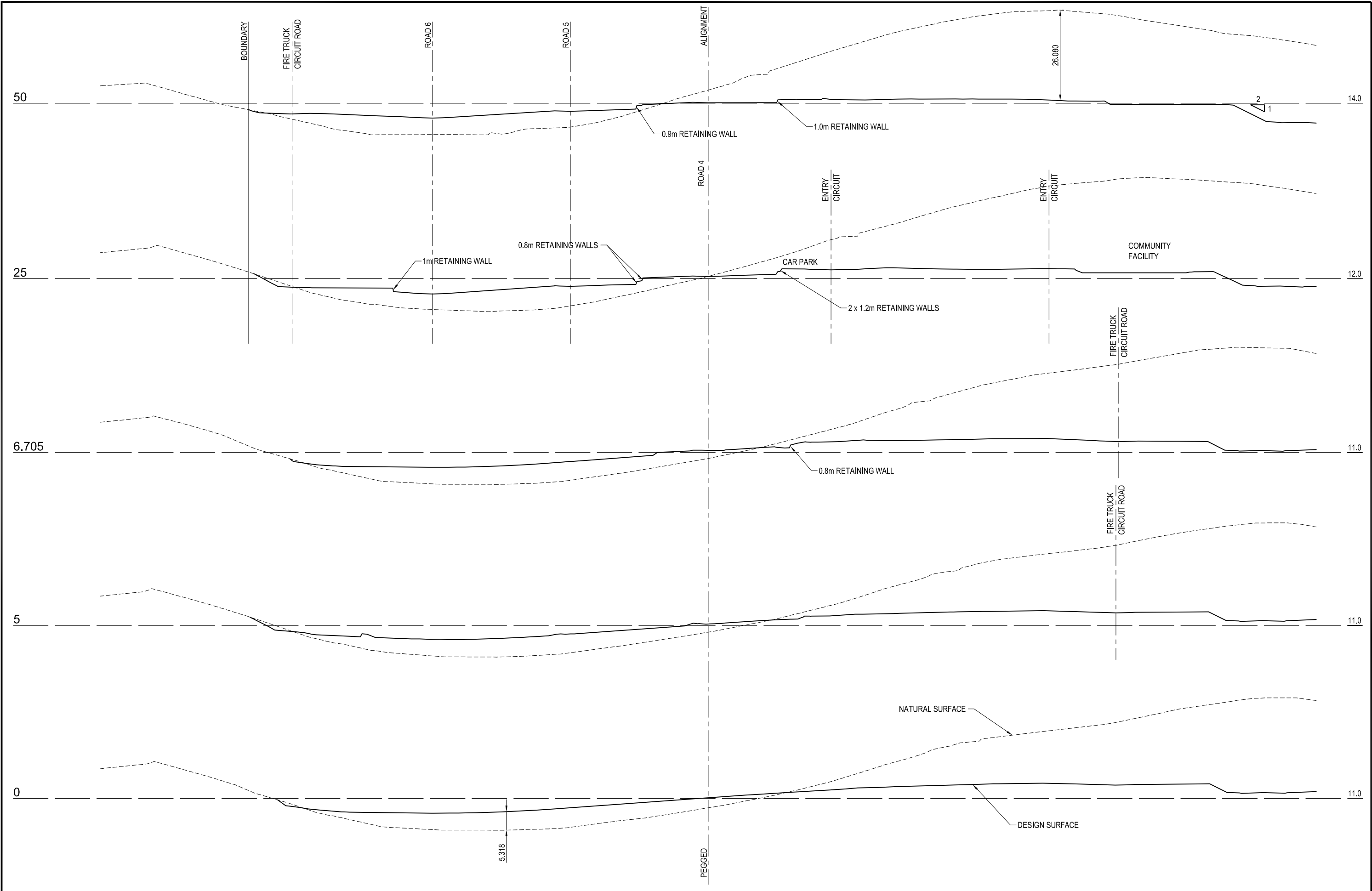
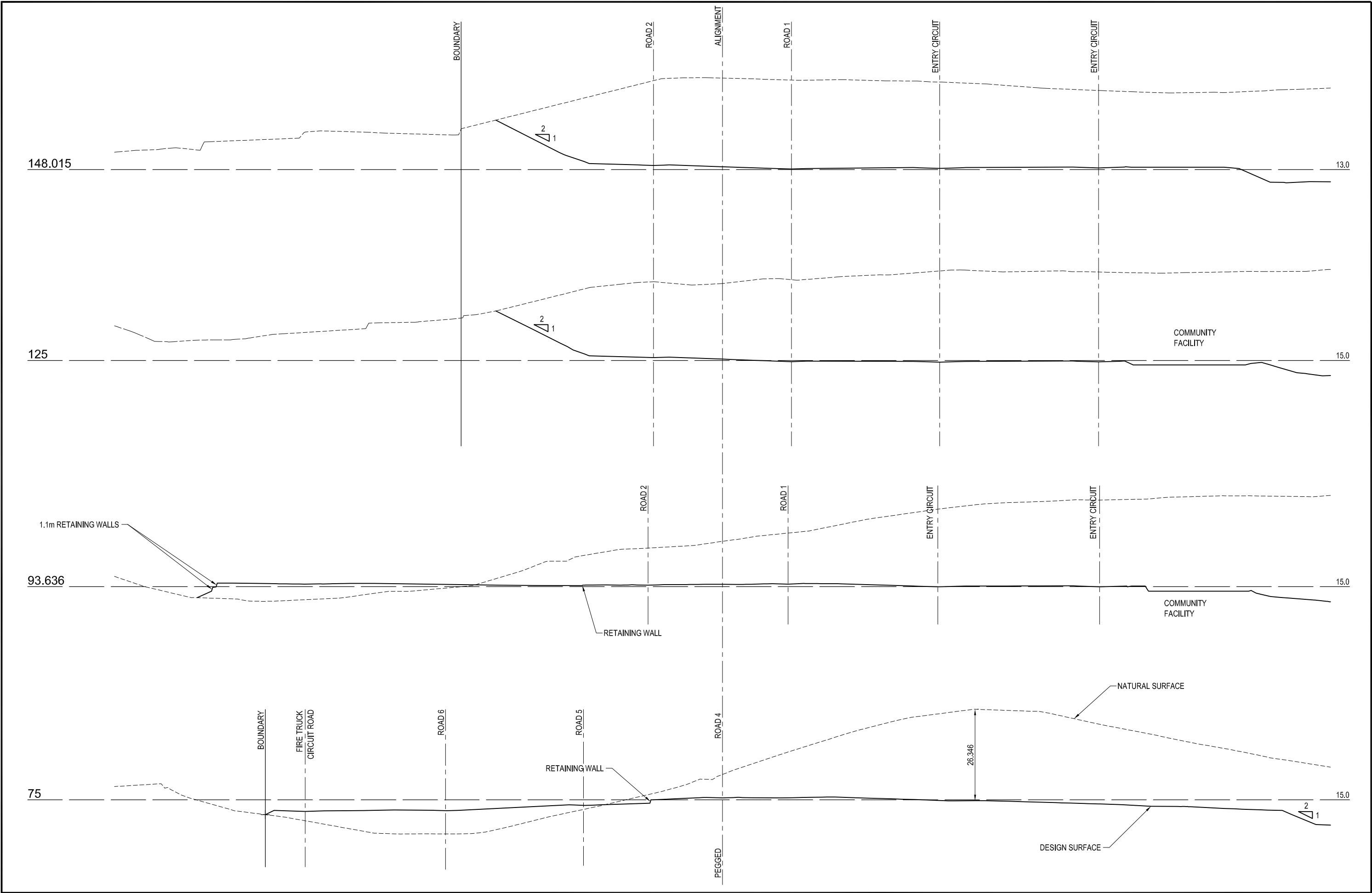


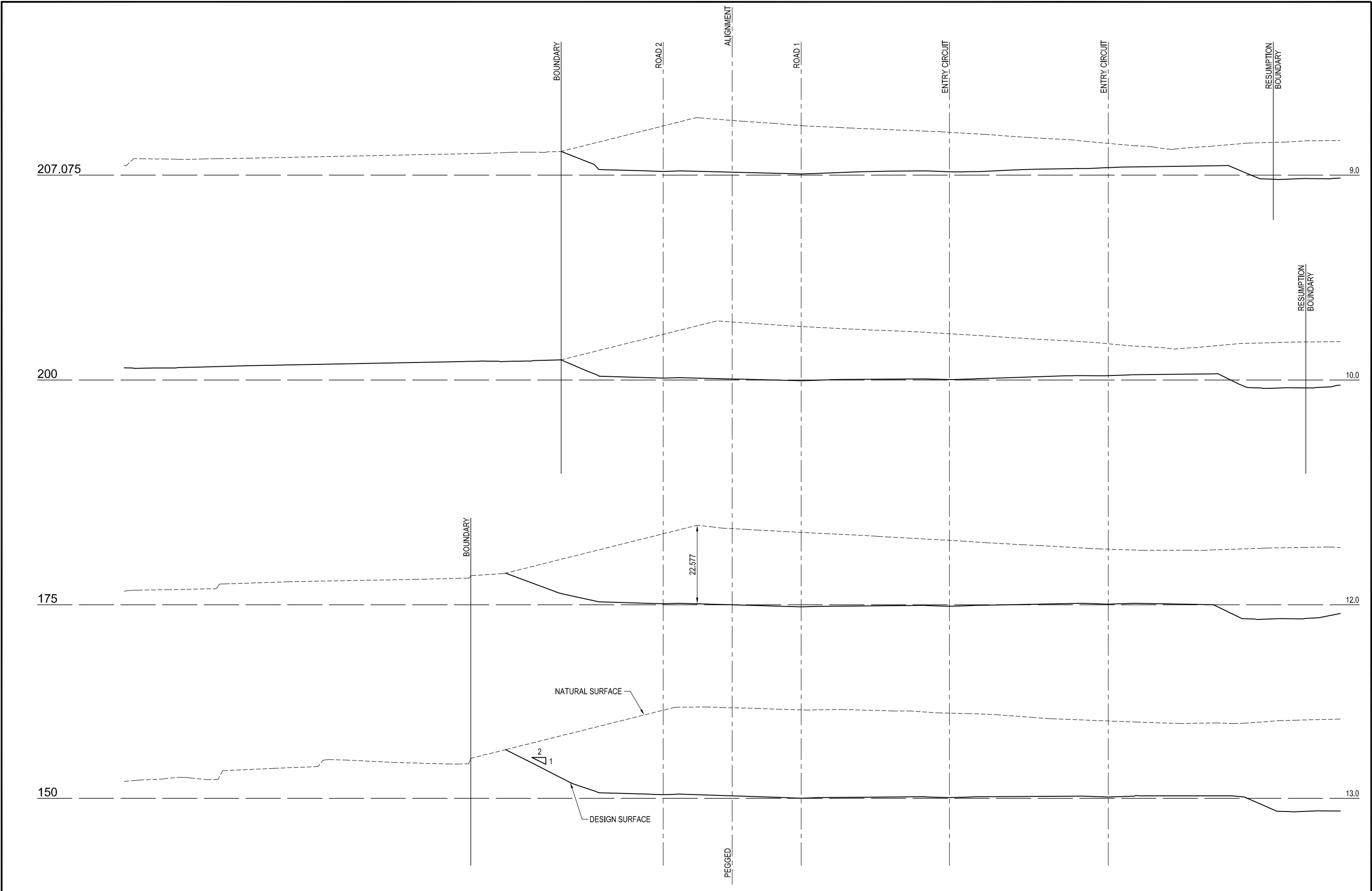
I	29-08-13	NOTE ADDED	<div><div>Knobel Consulting Pty Ltd</div><div><div><div>kc</div></div><div><div>KNOBEL CONSULTING PTY LTD</div><div>ENGINEERS - PROJECT MANAGERS</div></div></div><div><div>Phone: 07 5576 4168</div><div>Fax: 07 5576 6477</div><div>Email: eng@knobelconsulting.com.au</div></div><div><div>6/109 West Burleigh Road</div><div>Burleigh Heads QLD 4220</div><div>ABN 33 071 435 202</div></div></div>	CLIENT PROPORTIONAL PROPERTY INVESTMENTS PTY LTD		DESIGN TP	DRAWN AA/EL/NF	APPROVED	TITLE PRELIMINARY BULK EARTHWORKS LAYOUT PLAN SHEET 2 OF 2		PROJECT NO. K1868	
H	20-07-12	LAYOUT AMENDED		PROJECT TOURIST ACCOMMODATION KIRKWOOD ROAD, TWEED HEADS SOUTH, NSW				SCALE 1:500 AT A1 1:1000 AT A3 <div><div>0</div><div>10</div><div>20</div><div>30</div><div>40</div><div>50m</div></div>		DWG NO.	ISSUE	
G	09-07-12	ARCHITECTURAL LAYOUT AMENDED								P019	I	
F	22-05-12	ACCESS TRACKS AND GRASS-CEL ADDED										
E	10-05-12	EARTHWORKS SECTIONS ADDED										
ISSUE No.	DATE	AMENDMENT										



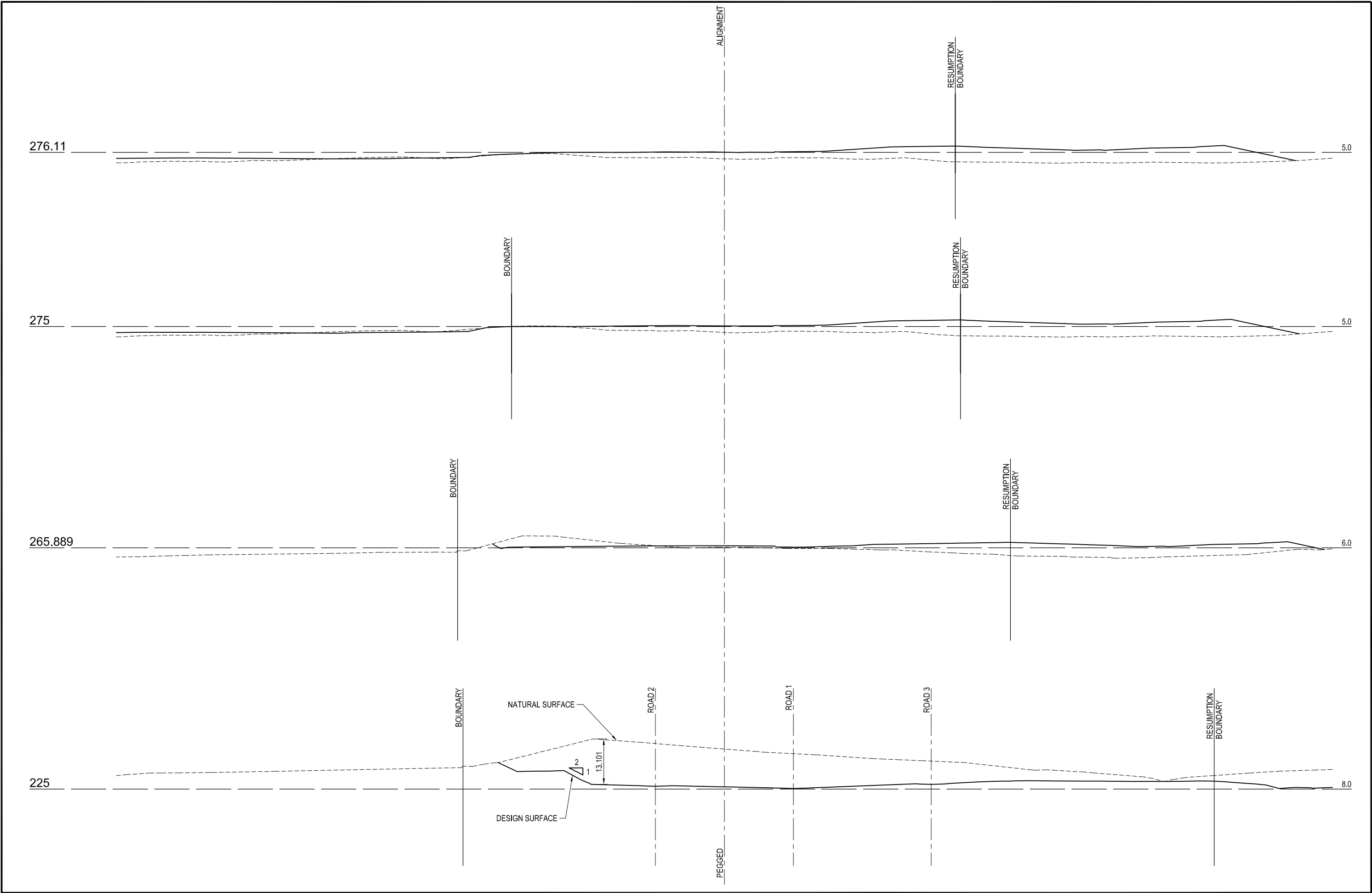
ISSUE No.			DATE			AMENDMENT			KNOBEL CONSULTING PTY LTD			ENGINEERS - PROJECT MANAGERS			CLIENT			DESIGN			DRAWN			APPROVED			TITLE			PROJECT NO.		
D			20-07-12			SECTIONS AMENDED			Knobel Consulting Pty Ltd			KNOBEL CONSULTING PTY LTD			PROPORTIONAL PROPERTY INVESTMENTS PTY LTD			TP			AA/NF						PRELIMINARY EARTHWORKS CROSS SECTIONS			K1868		
C			30-05-12			MINOR AMENDMENTS			kc			ENGINEERS - PROJECT MANAGERS			PROJECT												SHEET 1 OF 6			DWG NO.		
B			23-03-12			ISSUED FOR REPORT			Phone: 07 5576 4168			6/109 West Burleigh Road			TOURIST ACCOMMODATION															P021		
A			07-02-12			ISSUED FOR INFORMATION			Fax: 07 5576 6477			Burleigh Heads QLD 4220			KIRKWOOD ROAD, TWEED HEADS SOUTH, NSW															D		
SCALE			1:500 AT A1						Email: eng@knobelconsulting.com.au			ABN 33 071 435 202															0 10 20 30 40 50m					



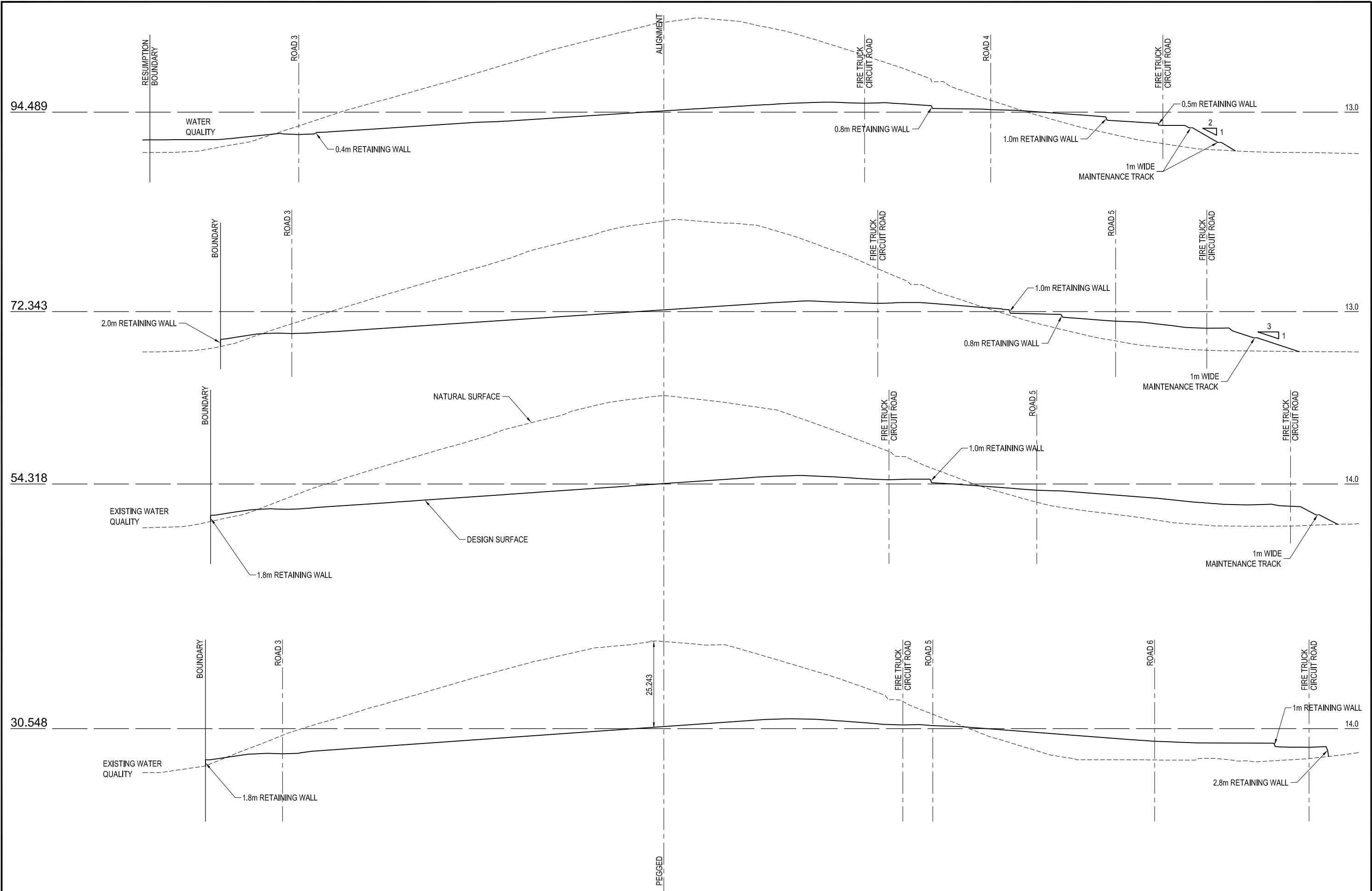
			<div><div>Knobel Consulting Pty Ltd</div><div></div><div>KNOBEL CONSULTING PTY LTD</div><div>ENGINEERS - PROJECT MANAGERS</div><div>Phone: 07 5576 4168 6/109 West Burleigh Road</div><div>Fax: 07 5576 6477 Burleigh Heads QLD 4220</div><div>Email: eng@knobelconsulting.com.au ABN 33 071 435 202</div></div>	CLIENT		DESIGN		DRAWN	APPROVED	TITLE		PROJECT NO.	
C	30-05-12	MINOR AMENDMENTS		PROPORTIONAL PROPERTY INVESTMENTS PTY LTD		TP	AA/NF		PRELIMINARY EARTHWORKS CROSS SECTIONS		K1868		
B	23-03-12	ISSUED FOR REPORT		PROJECT					SHEET 2 OF 6		DWG NO.		
A	07-02-12	ISSUED FOR INFORMATION		TOURIST ACCOMMODATION							ISSUE		
ISSUE No.	DATE	AMENDMENT		KIRKWOOD ROAD, TWEED HEADS SOUTH, NSW					SCALE		P022 C		
<div>1:500 AT A1 0 10 20 30 40 50m</div> <div>1:1000 AT A3 </div>													




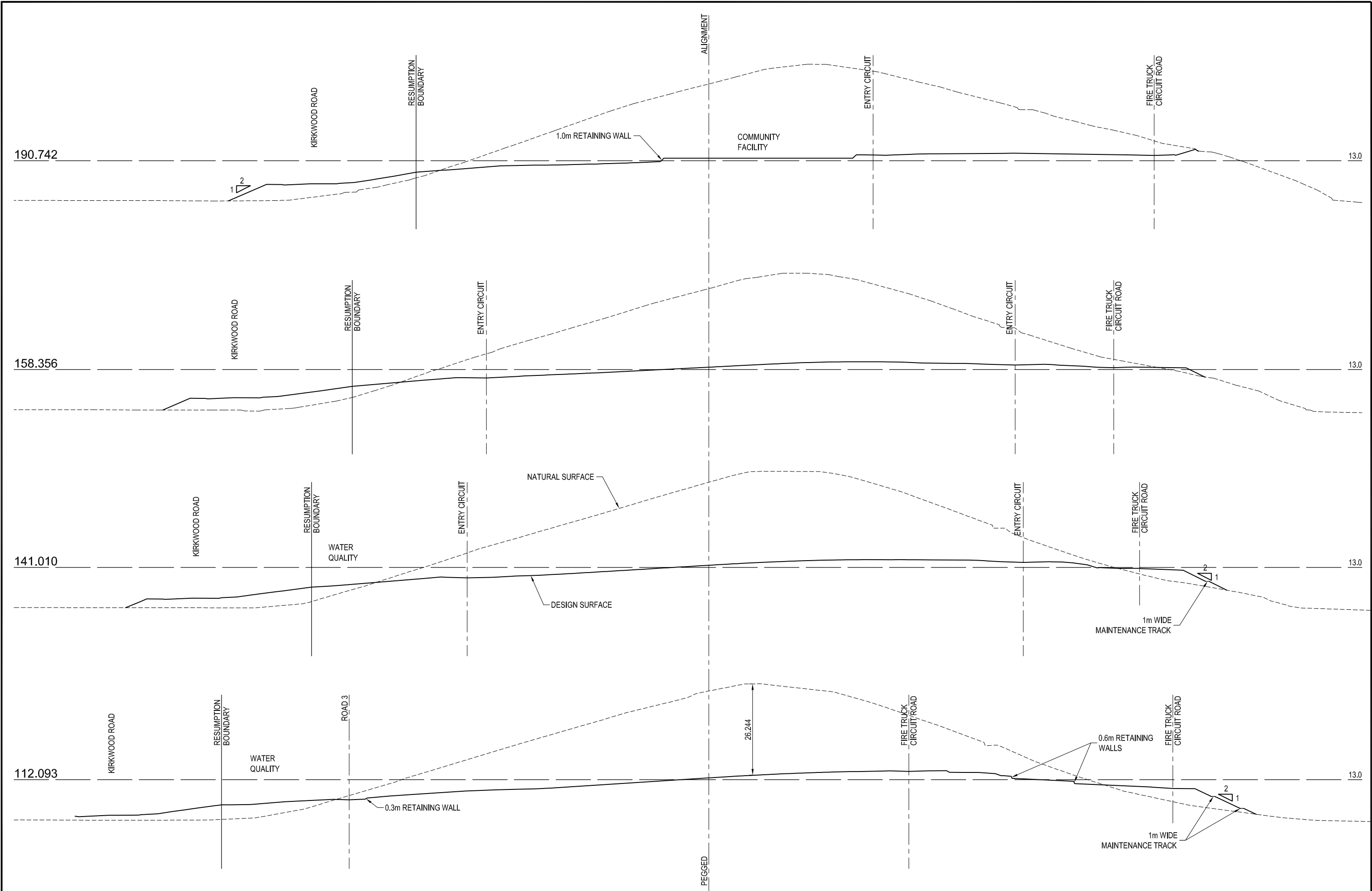
			<div><div>Knobel Consulting Pty Ltd</div><div></div><div>KNOBEL CONSULTING PTY LTD</div><div>ENGINEERS - PROJECT MANAGERS</div><div><div>Phone: 07 5576 41686/109 West Burleigh Road</div><div>Fax: 07 5576 6477Burleigh Heads QLD 4220</div><div>Email: eng@knobelconsulting.com.auABN 33 071 435 202</div></div></div>	CLIENT PROPORTIONAL PROPERTY INVESTMENTS PTY LTD		DESIGN TP	DRAWN AA/NF	APPROVED	TITLE PRELIMINARY EARTHWORKS CROSS SECTIONS SHEET 3 OF 6		PROJECT NO. K1868	
C	30-05-12	MINOR AMENDMENTS		PROJECT TOURIST ACCOMMODATION KIRKWOOD ROAD, TWEED HEADS SOUTH, NSW							DWG NO.	ISSUE
B	23-03-12	ISSUED FOR REPORT									P023	C
A	07-02-12	ISSUED FOR INFORMATION										
ISSUE No.	DATE	AMENDMENT										



			<div><div>Knobel Consulting Pty Ltd</div><div><div><div><div></div><div></div><div></div></div></div><div><div><div></div><div></div><div></div></div></div></div><div><div>ENGINEERS - PROJECT MANAGERS</div><div>Phone: 07 5576 41686/109 West Burleigh Road Fax: 07 5576 6477Burleigh Heads QLD 4220 Email: eng@knobelconsulting.com.auABN 33 071 435 202</div></div></div>	CLIENT PROPORTIONAL PROPERTY INVESTMENTS PTY LTD			DESIGN TP	DRAWN AA/NF	APPROVED	TITLE PRELIMINARY EARTHWORKS CROSS SECTIONS SHEET 4 OF 6		PROJECT NO. K1868	
C	30-05-12	MINOR AMENDMENTS			PROJECT TOURIST ACCOMMODATION KIRKWOOD ROAD, TWEED HEADS SOUTH, NSW						DWG NO. P024	ISSUE C	
B	23-03-12	ISSUED FOR REPORT											
A	07-02-12	ISSUED FOR INFORMATION											
ISSUE No.	DATE	AMENDMENT								SCALE 1:500 AT A1 1:1000 AT A3			



			<div><div><div>Knobel Consulting Pty Ltd</div><div></div></div><div><div>KNOBEL CONSULTING PTY LTD</div><div>ENGINEERS - PROJECT MANAGERS</div></div><div><div>Phone: 07 5576 41686/109 West Burleigh Road</div><div>Fax: 07 5576 6477Burleigh Heads QLD 4220</div><div>Email: eng@knobelconsulting.com.auABN 33 071 435 202</div></div></div>	CLIENT PROPORTIONAL PROPERTY INVESTMENTS PTY LTD		DESIGN TP	DRAWN AA/NF	APPROVED	TITLE PRELIMINARY EARTHWORKS CROSS SECTIONS SHEET 5 OF 6		PROJECT NO. K1868	
D	20-07-12	SECTIONS AMENDED		PROJECT TOURIST ACCOMMODATION KIRKWOOD ROAD, TWEED HEADS SOUTH, NSW						DWG NO.	ISSUE	
C	30-05-12	MAINTENANCE TRACKS ADDED								P025	D	
B	23-03-12	ISSUED FOR REPORT										
A	07-02-12	ISSUED FOR INFORMATION										
ISSUE No.	DATE	AMENDMENT						SCALE 1:500 AT A1 1:1000 AT A3		<div><div>01020304050m</div></div>		

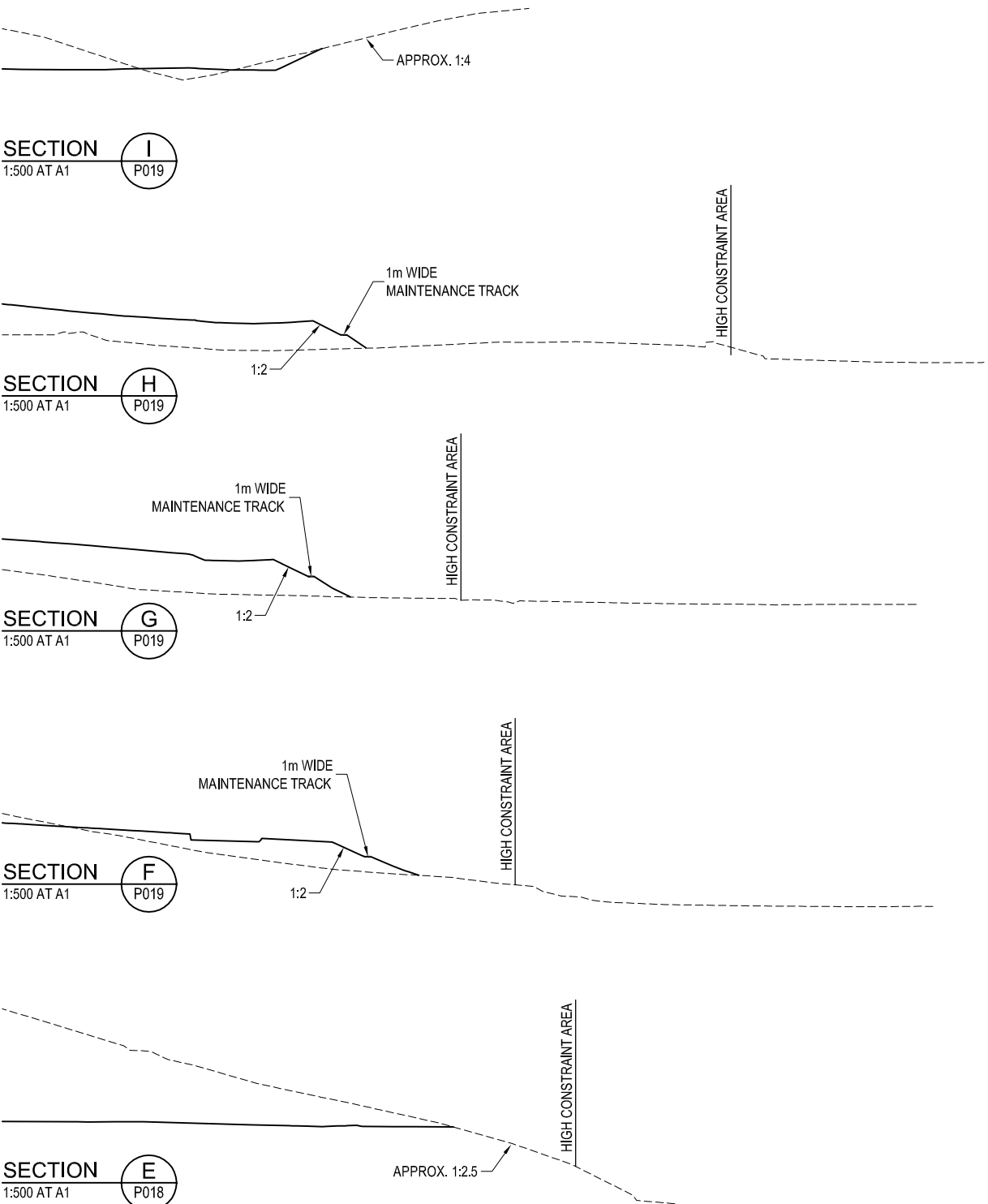
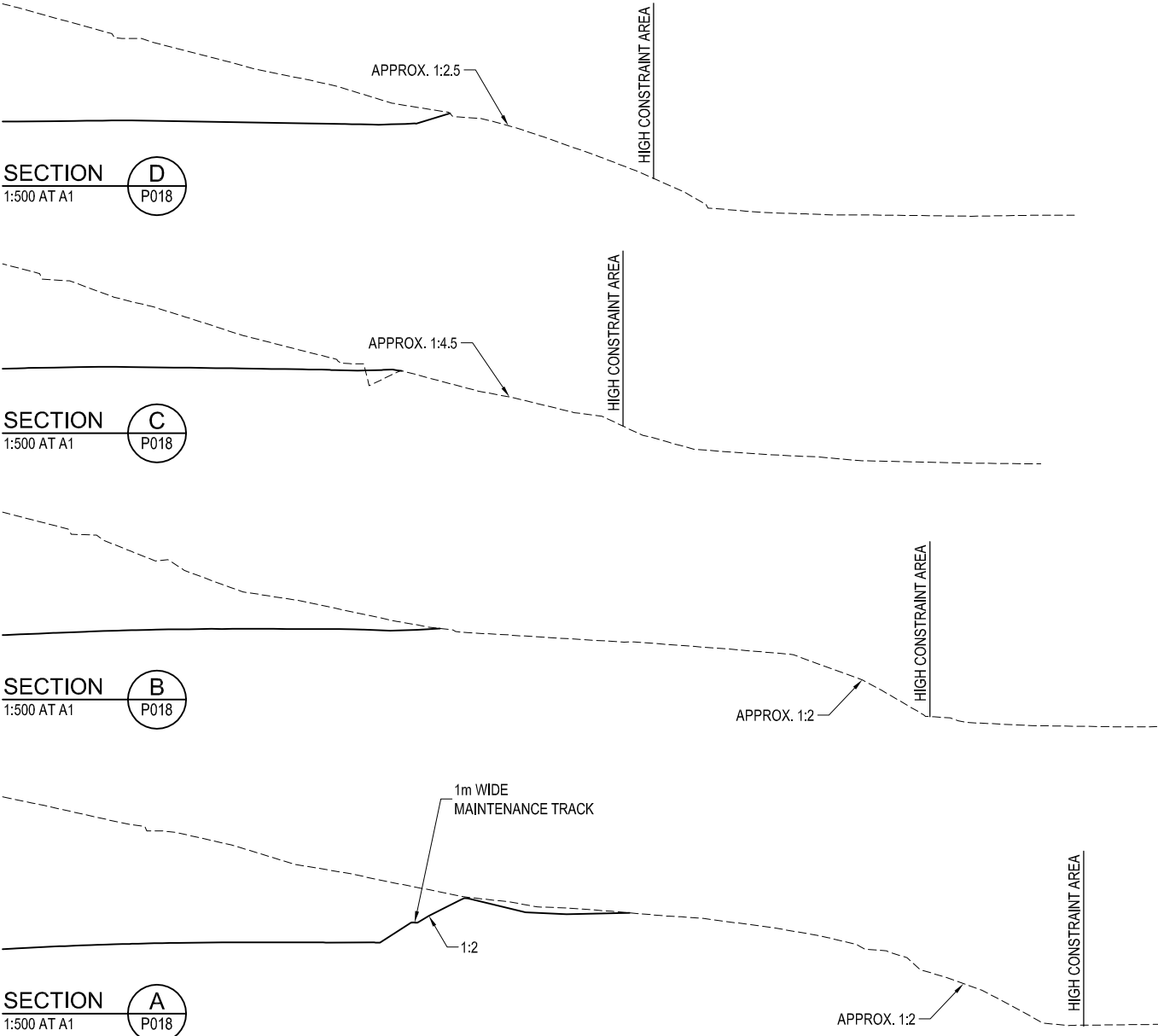


			<div><div>Knobel Consulting Pty Ltd</div><div><div><div></div></div><div><div>KC</div></div></div><div><div>KNOBEL CONSULTING PTY LTD</div><div>ENGINEERS - PROJECT MANAGERS</div><div><div>Phone: 07 5576 4168</div><div>Fax: 07 5576 6477</div><div>Email: eng@knobelconsulting.com.au</div></div><div><div>6/109 West Burleigh Road</div><div>Burleigh Heads QLD 4220</div><div>ABN 33 071 435 202</div></div></div></div>	CLIENT PROPORTIONAL PROPERTY INVESTMENTS PTY LTD		DESIGN TP	DRAWN AA/NF	APPROVED	TITLE PRELIMINARY EARTHWORKS CROSS SECTIONS SHEET 6 OF 6		PROJECT NO. K1868	
D	20-07-12	SECTIONS AMENDED		PROJECT TOURIST ACCOMMODATION KIRKWOOD ROAD, TWEED HEADS SOUTH, NSW						DWG NO.	ISSUE	
C	30-05-12	MAINTENANCE TRACKS ADDED								P026	D	
B	23-03-12	ISSUED FOR REPORT										
A	07-02-12	ISSUED FOR INFORMATION										
ISSUE No.	DATE	AMENDMENT						SCALE 1:500 AT A1 1:1000 AT A3 <div><div>0</div><div>10</div><div>20</div><div>30</div><div>40</div><div>50m</div></div>				

LEGEND

———— DESIGN SURFACE

- - - - - NATURAL SURFACE



			<div><div>Knobel Consulting Pty Ltd</div><div></div><div>KNOBEL CONSULTING PTY LTD</div><div>ENGINEERS - PROJECT MANAGERS</div><div><div>Phone: 07 5576 41686/109 West Burleigh Road</div><div>Fax: 07 5576 6477Burleigh Heads QLD 4220</div><div>Email: eng@knobelconsulting.com.auABN 33 071 435 202</div></div></div>	CLIENT		DESIGN	DRAWN	APPROVED	TITLE	PROJECT NO.	
D	20-07-12	SECTIONS AMENDED		PROPORTIONAL PROPERTY INVESTMENTS PTY LTD		TP/EL	EL			K1868	
C	28-05-12	MAINTENANCE TRACK ADDED		PROJECT TOURIST ACCOMMODATION KIRKWOOD ROAD, TWEED HEADS SOUTH, NSW					HIGH CONSTRAINT AREA CROSS SECTIONS	DWG NO.	ISSUE
B	15-05-12	SECTIONS AMENDED								P039	D
A	10-05-12	ISSUED FOR INFORMATION									
ISSUE No.	DATE	AMENDMENT							SCALE		
								1:500 AT A1 1:1000 AT A3	<div><div>01020304050m</div></div>		



LEGEND:

- 0-32.5% SLOPE
- >32.5% SLOPE

			<div><div><div>Knobel Consulting Pty Ltd</div><div></div><div>KNOBEL CONSULTING PTY LTD</div><div>ENGINEERS - PROJECT MANAGERS</div></div><div><div>Phone: 07 5576 4168</div><div>6/109 West Burleigh Road</div><div>Fax: 07 5576 6477</div><div>Burleigh Heads QLD 4220</div><div>Email: eng@knobelconsulting.com.au</div><div>ABN 33 071 435 202</div></div></div>	CLIENT PROPORTIONAL PROPERTY INVESTMENTS PTY LTD		DESIGN TP	DRAWN EL	APPROVED	TITLE EXISTING SURFACE SLOPE ANALYSIS PLAN		PROJECT NO. K1868	
B	20-07-12	LAYOUT AMENDED		PROJECT TOURIST ACCOMMODATION KIRKWOOD ROAD, TWEED HEADS SOUTH, NSW					DWG NO. P040		ISSUE B	
A	10-05-12	ISSUED FOR INFORMATION										
ISSUE No.	DATE	AMENDMENT										

LEGEND:

- 0-32.5% SLOPE
>32.5% SLOPE



LOT
136

KIRKWOOD ROAD

PACIFIC HWY

LOT
40

LOT
36

LOT
1-33

HARPER STREET

WREN STREET

FIRETAIL CT

ROADWAY No. 3

ROADWAY No. 1

ROADWAY No. 2

ENTRY CIRCUIT

ENTRY CIRCUIT

ROADWAY No. 4

ROADWAY No. 5

ROADWAY No. 6

FIRE TRUCK CURCUIT ROAD

FIRE TRUCK CURCUIT ROAD



Knobel Consulting Pty Ltd
ENGINEERS - PROJECT MANAGERS

Phone: 07 5576 4168 6/109 West Burleigh Road
Fax: 07 5576 6477 Burleigh Heads QLD 4220
Email: eng@knobelconsulting.com.au ABN 33 071 435 202

CLIENT
PROPORTIONAL PROPERTY INVESTMENTS PTY LTD

PROJECT
TOURIST ACCOMMODATION
KIRKWOOD ROAD, TWEED HEADS SOUTH, NSW

DESIGN
TP

DRAWN
EL

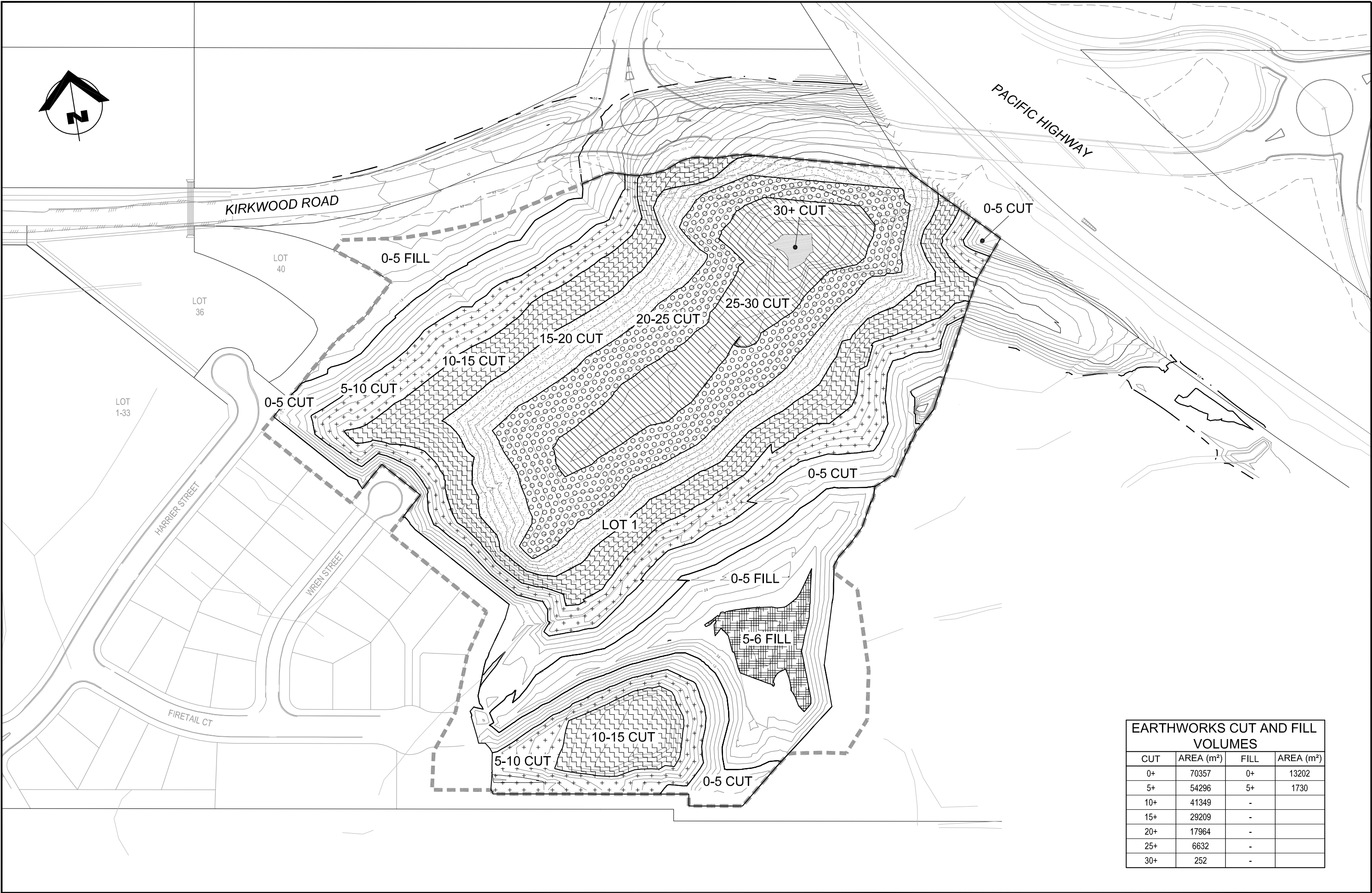
APPROVED

TITLE
**DESIGN SURFACE
SLOPE ANALYSIS PLAN**

PROJECT NO.
K1868

DWG NO. **P041**
ISSUE **B**

SCALE 1:1000 AT A1
1:2000 AT A3 0 20 40 60 80 100m



EARTHWORKS CUT AND FILL VOLUMES			
CUT	AREA (m²)	FILL	AREA (m²)
0+	70357	0+	13202
5+	54296	5+	1730
10+	41349	-	
15+	29209	-	
20+	17964	-	
25+	6632	-	
30+	252	-	

			 Knobel Consulting Pty Ltd ENGINEERS - PROJECT MANAGERS Phone: 07 5576 4168 Fax: 07 5576 6477 Email: eng@knobelconsulting.com.au	6/109 West Burleigh Road Burleigh Heads QLD 4220 ABN 33 071 435 202	CLIENT PROPORTIONAL PROPERTY INVESTMENTS PTY LTD PROJECT TOURIST ACCOMMODATION KIRKWOOD ROAD, TWEED HEADS SOUTH, NSW	DESIGN TP	DRAWN EL/NF	APPROVED	TITLE BULK EARTHWORKS CUT AND FILL PLAN	PROJECT NO. K1868	
A	29-08-13	ISSUED FOR REPORT								DWG NO. P043	ISSUE A
ISSUE No.	DATE	AMENDMENT									

SCALE 1:1000 AT A1
1:2000 AT A3

0

20

40

60

80

100m

APPENDIX

C

Tweed Shire Council

Kirkwood Road Extension (Ref: ED 06004-02)

Proposed Kirkwood Road Extension (Ref: ED 06004-05)

and

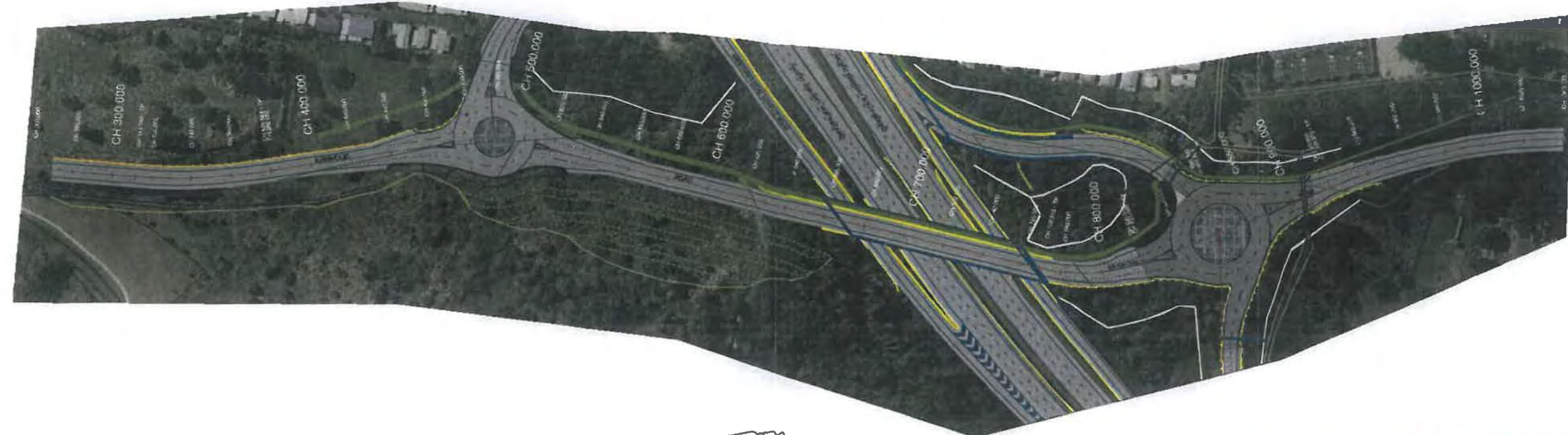
Cross-Sections – Kirkwood Road (Ref: ED 06004C-08)

Cross-Sections – Kirkwood Road (Ref: ED 06004B-09)

Cross-Sections – Kirkwood Road (Ref: ED 06004B-10)

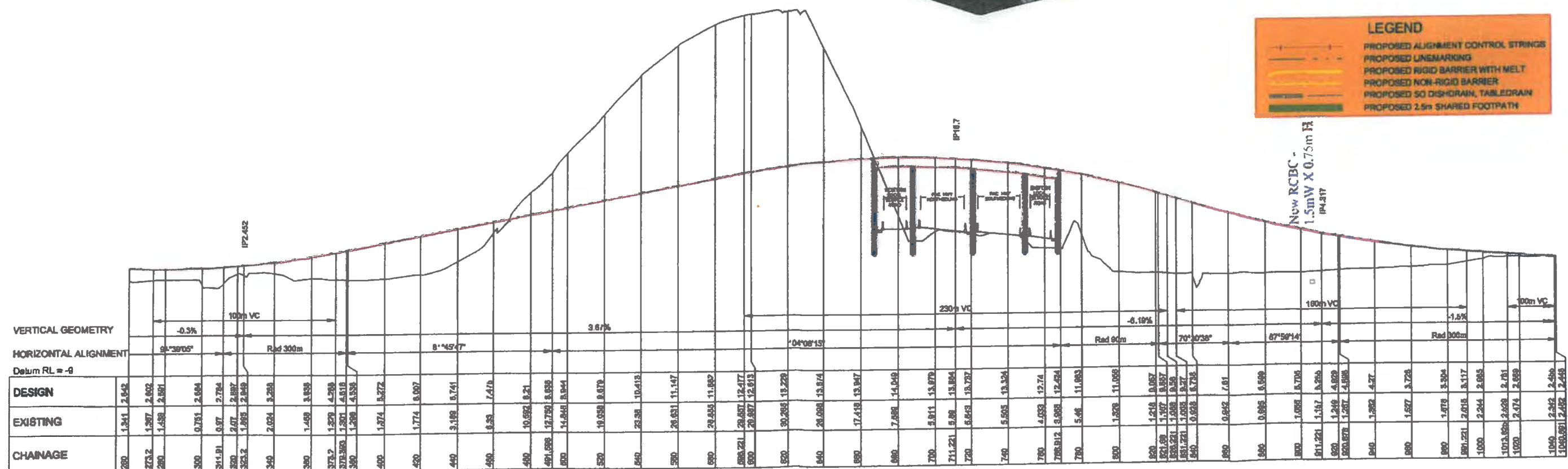
Cross-Sections – Kirkwood Road (Ref: ED 06004B-11)

Cross-Sections – Kirkwood Road (Ref: ED 06004B-12)



LEGEND

- PROPOSED ALIGNMENT CONTROL STRINGS
- PROPOSED UNMARKING
- PROPOSED RIGID BARRIER WITH MELT
- PROPOSED NON-RIGID BARRIER
- PROPOSED 50 DISHRAIN, TABLEDRAIN
- PROPOSED 2.5m SHARED FOOTPATH



LONGITUDINAL SECTION - KIRKWOOD ROAD CONTROL CENTRELINE

Local Government Engineering Services Pty. Ltd. ABN 61 055 099 357

LEGES

General: 153 Dube St, Southport, QLD, 4215
Ph: 55 07233175, Fax: 55 07233176, Email: info@lges.com.au

Port Macquarie: 49 Lord St, Port Macquarie, NSW, 2444
Ph: 51 45643698, Fax: 51 45643698, Email: info@lges.com.au

Macquarie: 13 Cabral Centre, 425, High St, Macquarie, NSW, 2105
Ph: 51 46344336, Fax: 51 46344338, Email: info@lges.com.au

Phone: 08 827 5007 web: www.lges.com.au

CLIENT

PROJECT

PROPOSED KIRKWOOD ROAD EXTENSION

APPROVAL

SCALE: (A1 plot)

PLAN AND TOP/SECTION

VERTICAL

DESIGNED

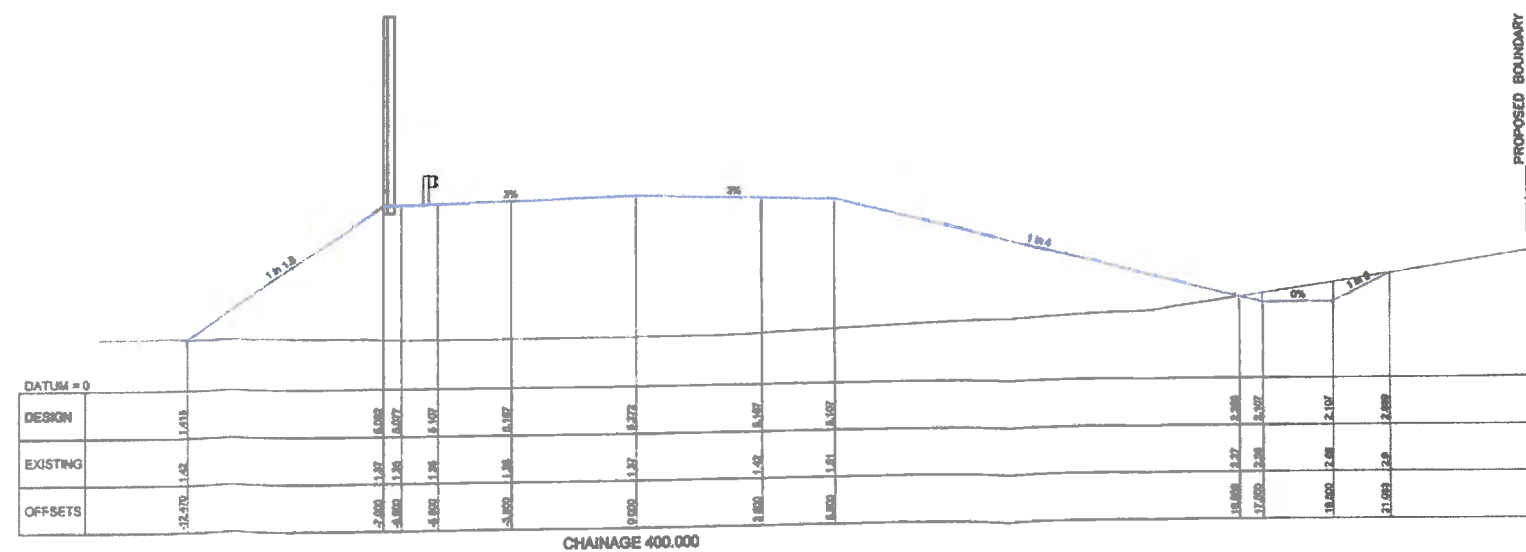
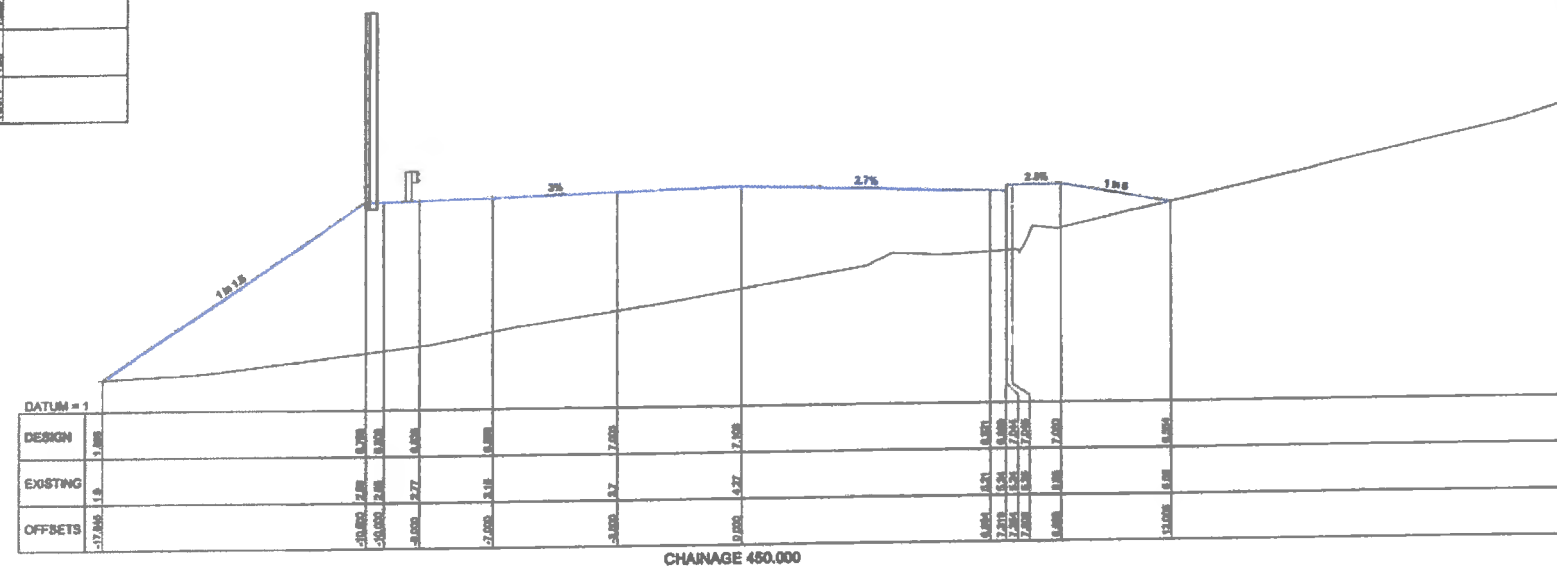
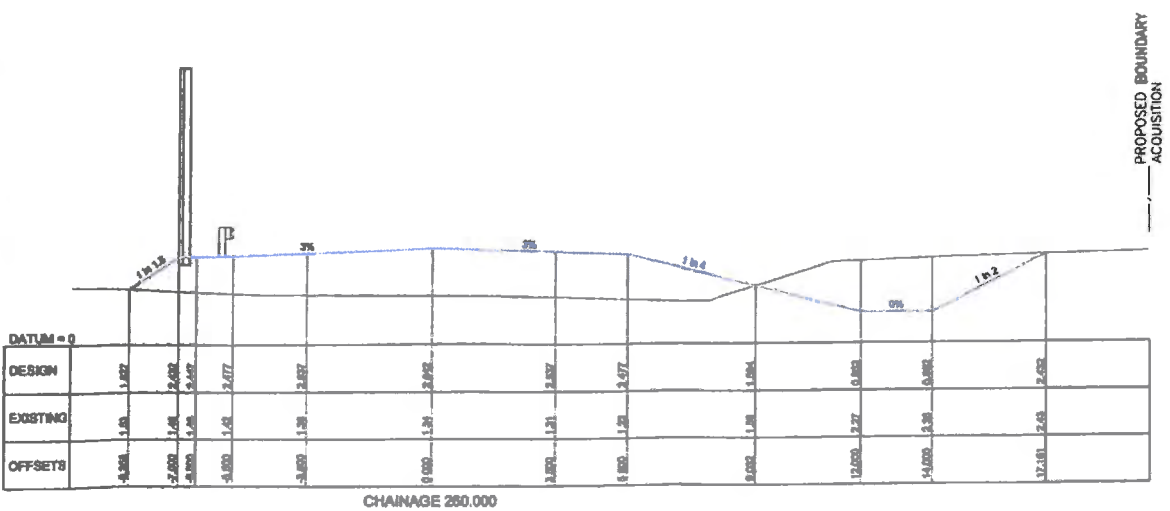
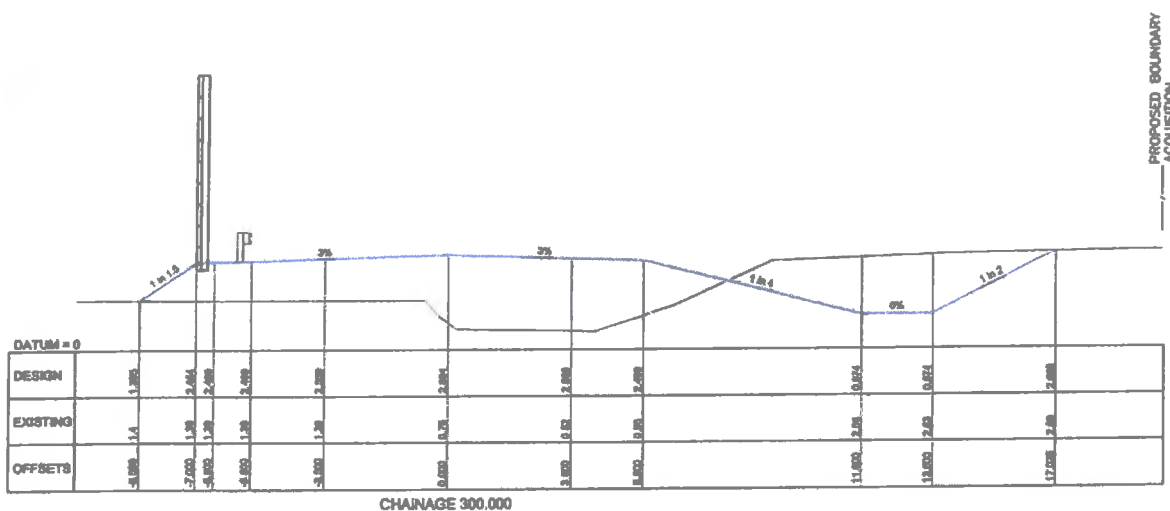
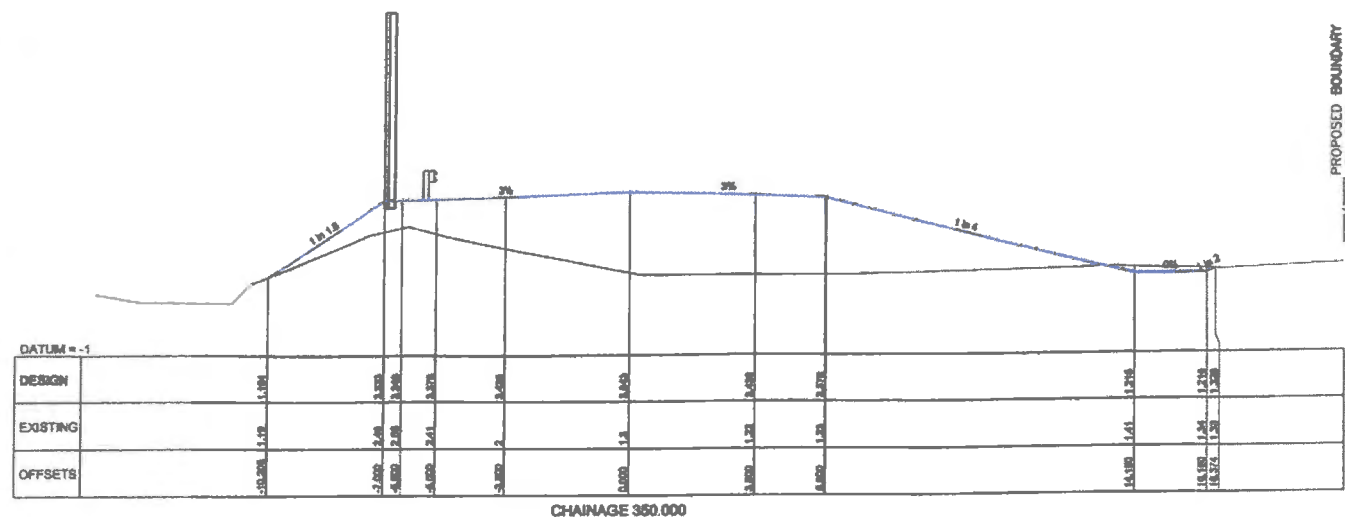
DRAWN

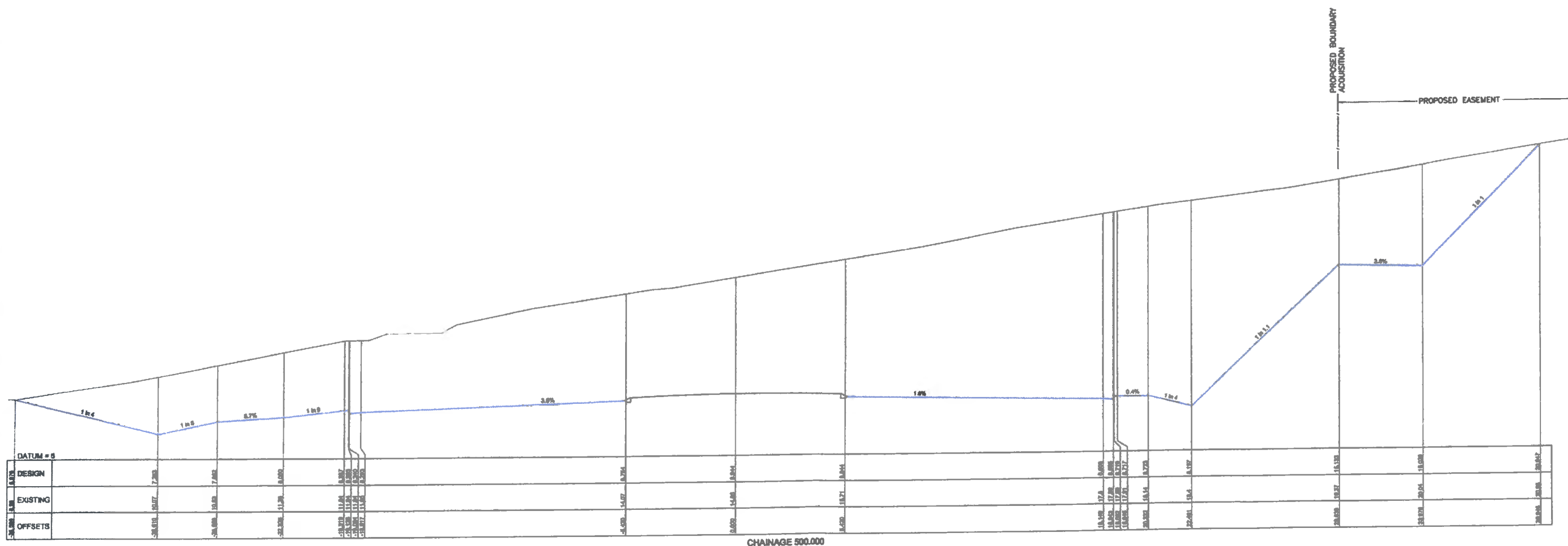
CHECKED

DATE

05

ED 06004-05





Local Government Engineering Services Pty. Ltd. ABN 64 055 099 557

LEG
ES

Port Macquarie: 69 Lord St, Port Macquarie, NSW, 2444
Ph: 02 65843888, Fax: 02 65843988, Email: rob@lges.com.au
Beverly: 162 Ocho St, Beverly, NSW, 2360
Ph: 02 67225110, Fax: 02 67225918, Email: andrew@lges.com.au

Please visit our web site: www.lges.com.au

CLIENT TWEED SHIRE COUNCIL & RTA

PROJECT PACIFIC HIGHWAY WIDENING,
LOCAL SERVICE ROADS &
KIRKWOOD ROAD EXTENSION
CROSS-SECTIONS - KIRKWOOD ROAD

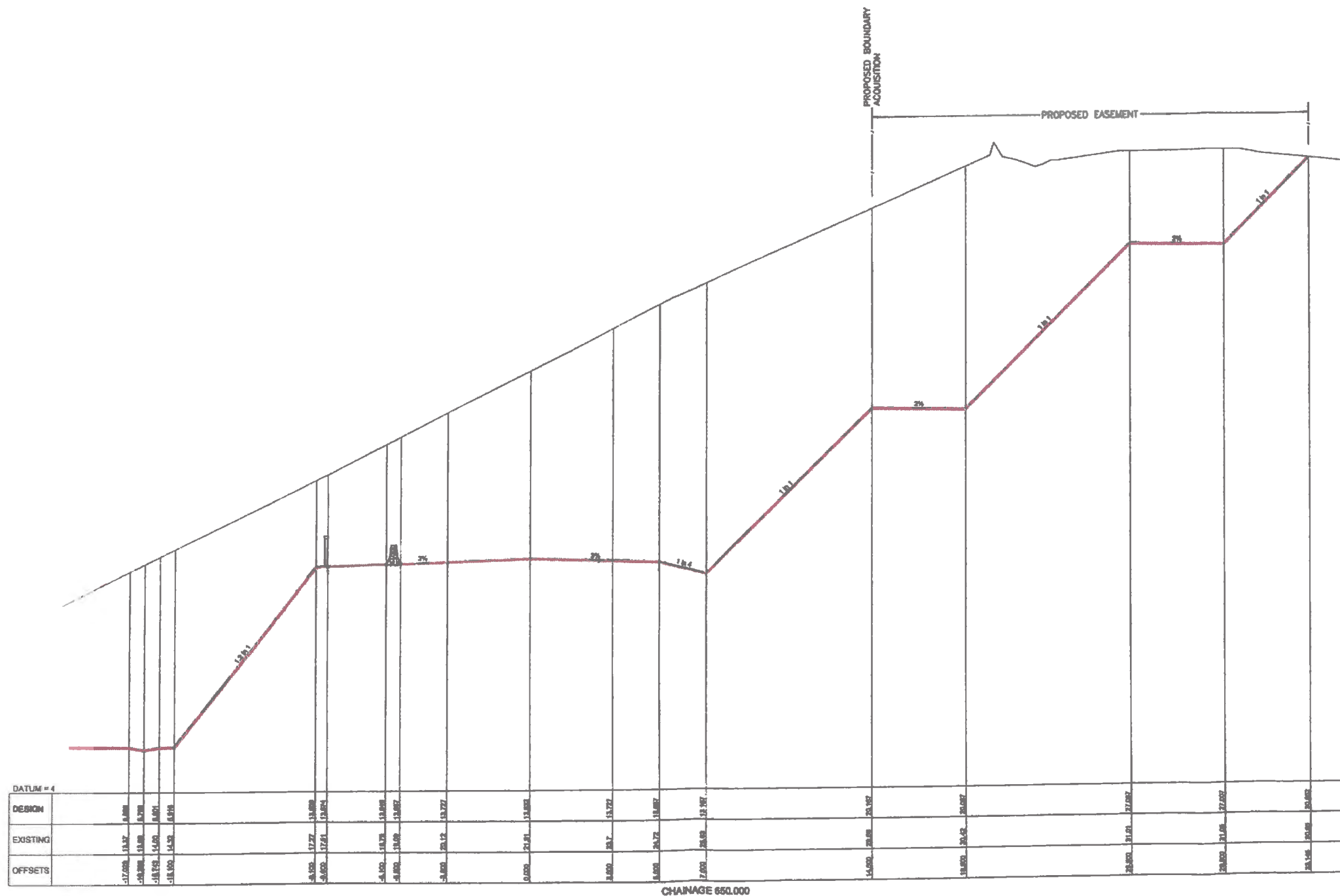
APPROVAL

SCALE: (A1 plot)



No	AMENDMENT	AUTH	DATE
DESIGNED:	J. Coote		
DRAWN:	J. Coote		
CREATED:			
SURVEYED:	TSC		
DATUM:	AHD		

FILE No.: PM2004/2000
DWG NAME: Kirkwood Road Sections.dwg
SHEET: 09
Client's Record No.: **ED 06004B - 09**



Local Government Engineering Services Pty. Ltd. ABN 64 005 099 557

LEGS

Port Macquarie : 69 Lord St, Port Macquarie, NSW, 2444
 PH: 02 65843888, Fax: 02 65843988, Email: info@lges.com.au
 Inverell : 162 Onda St, Inverell, NSW, 2360,
 PH: 02 67225110, Fax: 02 67225918, Email: inverell@lges.com.au

Please visit our web site: www.lges.com.au

CLIENT
TWEED SHIRE COUNCIL & RTA

PROJECT
**PACIFIC HIGHWAY WIDENING,
 LOCAL SERVICE ROADS &
 KIRKWOOD ROAD EXTENSION
 CROSS-SECTIONS - KIRKWOOD ROAD**

APPROVAL

SCALE: (A1 plot)

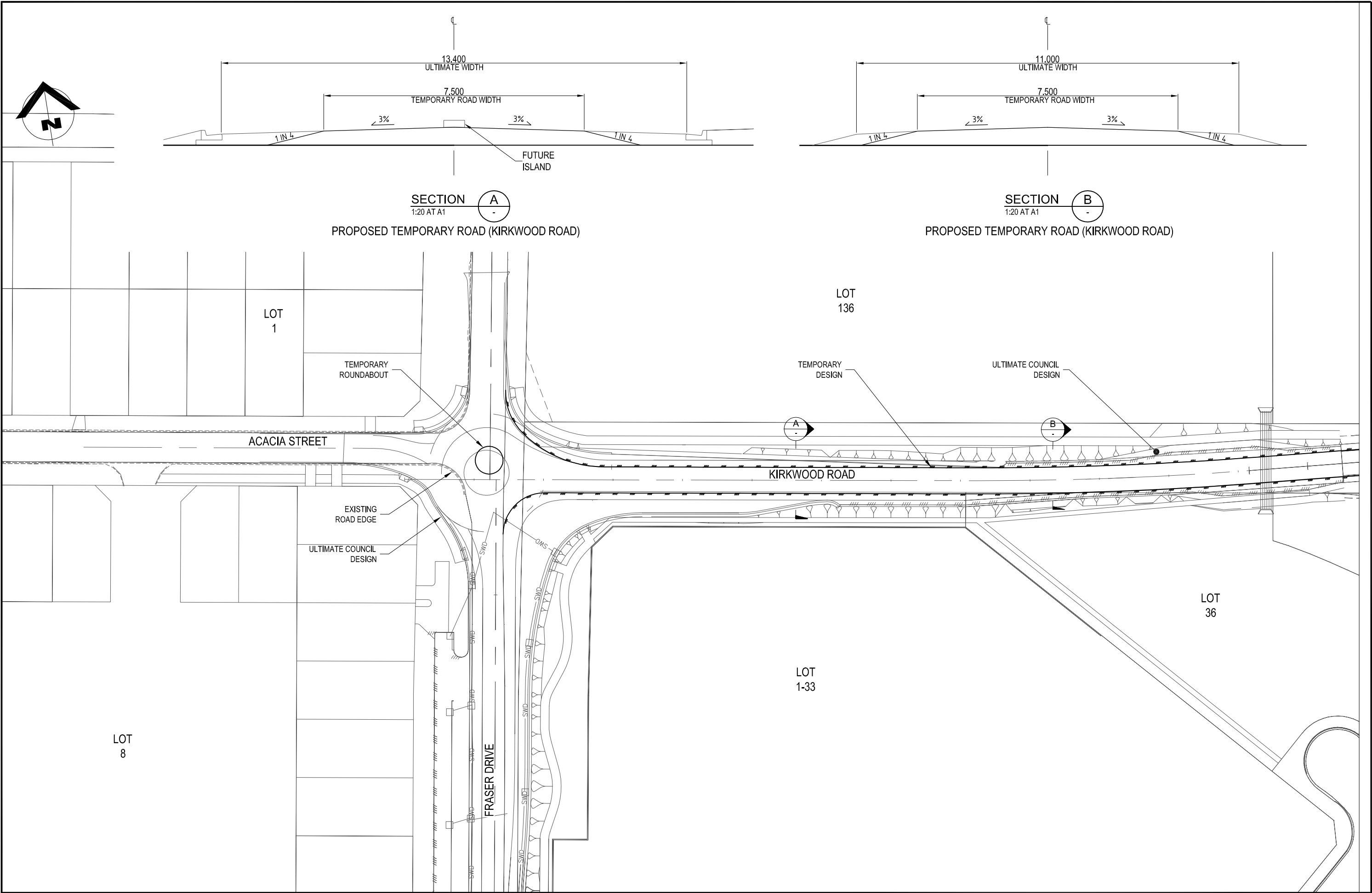


DESIGNED:	J. Coole	FILE No.:	PM294/2009
DRAWN:	J. Coole	DWG NAME:	Kirkwood Road Sections.dwg
CREATED:		SHEET:	12
SURVEYED:	TSC	Client's Record No.:	ED 06004B - 12
DATUM:	AHD		

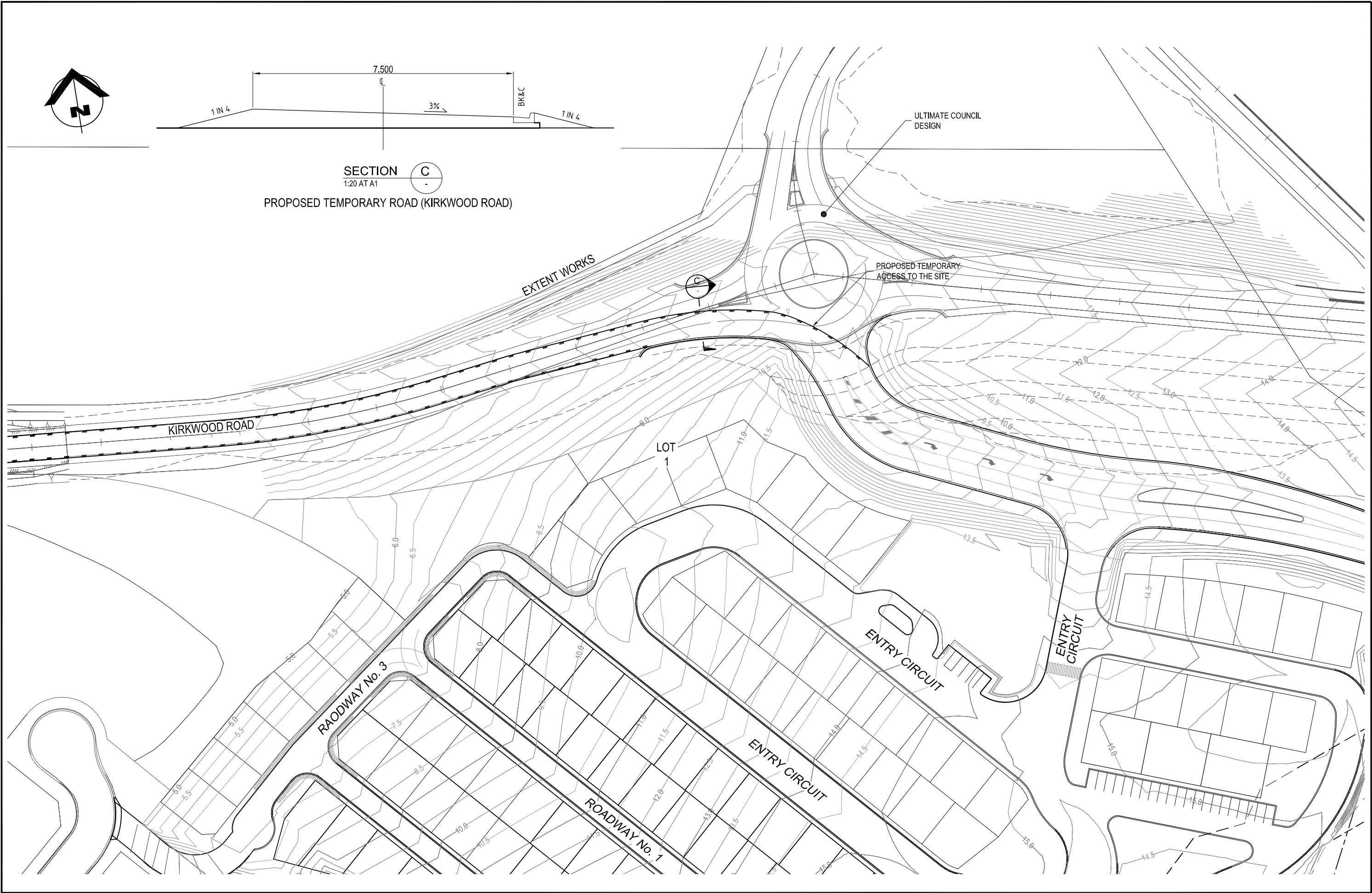
APPENDIX

D

Knobel Consulting Pty Ltd
Temporary Kirkwood Road Access Plan Sheets 1 and 2
(Ref: K1868/P008/A-P009/C)



			<div><div>Knobel Consulting Pty Ltd</div><div><div><div>KC</div></div></div><div><div><div>ENGINEERS - PROJECT MANAGERS</div><div><div>Phone: 07 5576 4168 Fax: 07 5576 6477 Email: eng@knobelconsulting.com.au</div><div><div>6/109 West Burleigh Road Burleigh Heads QLD 4220 ABN 33 071 435 202</div></div></div></div></div></div>	CLIENT PROPORTIONAL PROPERTY INVESTMENTS PTY LTD		DESIGN TP/DC	DRAWN AA	APPROVED	TITLE TEMPORARY KIRKWOOD ROAD ACCESS PLAN - SHEET 1 OF 2		PROJECT NO. K1868	
				PROJECT TOURIST ACCOMMODATION KIRKWOOD ROAD, TWEED HEADS SOUTH, NSW						DWG NO.	ISSUE	
A	23-03-12	ISSUED FOR REPORT								P008	A	
ISSUE No.	DATE	AMENDMENT										



			<div>Knobel Consulting Pty Ltd</div> <div>KNOBEL CONSULTING PTY LTD</div> <div></div> <div>ENGINEERS - PROJECT MANAGERS</div> <div>Phone: 07 5576 4168 6/109 West Burleigh Road</div> <div>Fax: 07 5576 6477 Burleigh Heads QLD 4220</div> <div>Email: eng@knobelconsulting.com.au ABN 33 071 435 202</div>	CLIENT PROPORTIONAL PROPERTY INVESTMENTS PTY LTD			DESIGN TP/DC	DRAWN AA	APPROVED	TITLE TEMPORARY KIRKWOOD ROAD ACCESS PLAN - SHEET 2 OF 2		PROJECT NO. K1868	
C	20-07-12	LAYOUT AMENDED		PROJECT TOURIST ACCOMMODATION KIRKWOOD ROAD, TWEED HEADS SOUTH, NSW						DWG NO. P009		ISSUE C	
B	30-05-12	MINOR AMENDMENTS											
A	23-03-12	ISSUED FOR REPORT											
ISSUE No.	DATE	AMENDMENT											

APPENDIX

E

Knobel Consulting Pty Ltd

Preliminary Roadworks Layout Plan Sheets 1 and 2

(Ref: K1868/P028-P029/C)

and

Preliminary Roadworks Longitudinal Sections Sheets 1-5

(Ref: K1868/P030-P034/A)



ISSUE No.	DATE	AMENDMENT
C	20-07-12	LAYOUT AMENDED
B	30-05-12	GRASS-CEL ADDED
A	23-03-12	ISSUED FOR REPORT



Knobel Consulting Pty Ltd
KNOBEL CONSULTING PTY LTD
ENGINEERS - PROJECT MANAGERS

Phone: 07 5576 4168
Fax: 07 5576 6477
Email: eng@knobelconsulting.com.au


6/109 West Burleigh Road
Burleigh Heads QLD 4220
ABN 33 071 435 202

CLIENT	PROPORTIONAL PROPERTY INVESTMENTS PTY LTD
PROJECT	TOURIST ACCOMMODATION KIRKWOOD ROAD, TWEED HEADS SOUTH, NSW

DESIGN	TP
DRAWN	AA
APPROVED	

TITLE
PRELIMINARY ROADWORKS
LAYOUT PLAN
SHEET 1 OF 2

SCALE 1:500 AT A1
1:1000 AT A3



PROJECT NO.	K1868
DWG NO.	P028
ISSUE	C

